

84EC(S) User Manual

1. Keyborad Function Illustrate

Special keys Function table

L FN+	ESC	Number Lock	Lock/Unlock number keyboard and disable it;Number keyboard be lock and numlock indicator is off. Press numlock key can't open the numlock indicator. Disable in program mode;Shutdown don't memory.
R FN+	ESC	Keyboard Lock	Lock/Unlock the keyboard;lock the keyboard,ESC indicator into the colorful breathing state;Shutdown don't memory.
L/R FN+	F8	Adjust trigger point	Adjustable Trigger point (high/low stage) Shutdown doesn't memory.Default in fit trigger point.
	L-Ctrl	Caps/Ctrl exchange	Press 3 seconds for indicator flash 1 times.Achieve the exchange between "left Ctrl" and "Caps". Shutdown doesn't memory
	Win	Win Lock	Press 3 seconds for indicator flash 1 times,open Win Key;indicator flash 2 times ,lock Win key.Disable in Mac OS;Shutdown memory
	L-Alt	Win2Alt	Press 3 seconds for indicator flash 2 times,Match Mac OS(Achieve the exchange between "left Win" and "Left Alt", "Right Alt be place of Right Win" ,,"Menu be place of Right Alt"). Press 3 seconds for indicator flash 1 times,match Win OS(key to return),Shutdown memory Note:1.In wired mode and match Mac OS,that is need waiting for some time. 2.If you want to open programming software,you need to match to Win OS(indicator flash 1 times),otherwise you won't be able to open the programming software.
	Q	Unit Time	4 gear to adjust the time required by the mouse cursor to move a cell.respectively,USB:8/6/4/2ms,Bluetooth:12/9/7/5 ms;corresponding indicator flash 1-4 times;Shutdown memory
	R	Unit Pixel	4 gear to adjust the number of pixel required by the

			mouse cursor the move a cell.respectively,2/3/4/5points;corresponding indicator flash 1-4 times;Shutdown memory
	{	Repeat Rate	4 gear to adjust the speed of key hitting,respectively,×1,×2,×4,×8,corresponding indicator flash 1-4 times;In USB/Bluetooth mode,×1 restore normal to send code,response delay adjustment is invalid;Default in the first gear;Shutdown doesn't memory
	}	Response Delay	3 gear to adjust the keystroke response delay,respectively,500,300,100ms,corresponding indicator flash 1-3 times;Default in the first gear;Shutdown doesn't memory
	Del	"M" Key	Press to exchange Office mode and Program mode, "M" Light turned on and off after 1 second at Office mode, "M" Light turned on and off after 10 seconds at Program mode. Shutdown memory
	App	App Lock	Lock/Unlock App key;Disable in Mac OS;Shutdown don't memory.
	↑	luminance +	Regulate the luminance of the indicator
	↓	luminance -	Regulate the luminance of the indicator
L FN+	R FN	Lock right FN	Long press 3 seconds for indicator flash 1times to normal,indicator flash 2times to lock right FN(lock right FN is exchange right FN layer and top layer),indicator flash 3 times to lock left FN(lock left FN is exchange left FN layer and top layer);Be enable in program mode Shutdown doesn't memory,Top layer is none FN layer
R FN+	L FN	Lock left FN	
※In program mode,the keyboard can be set 2 layer(left FN layer and right FN layer)			

USB,PS/2 Interface settings

Press "Left FN /Right FN + Backspace" for 5seconds ,indicator flash 1 times to USB, indicator flash 2 times to auto identify for USB,PS/2.and restart the keyboard.The default settings is set to USB.

Clear Key Counter

Press "Left FN+Right FN + Delete" for 5seconds ,indicator flash,and the key counter will be clear .

Restore factory settings

Press “ESC + L-ctrl + Delete+ Right” for 5seconds will restore factory settings, restore factory settings will restart keyboard.

2. Keyboard configuration

There are two modes for the keyboard, OFFICE mode and Custom mode. OFFICE mode is also Standard mode, as for Custom mode, you can make different configuration to the keyboard, the details for how to configuration and save under custom mode are in below.

※ NOTE : Press the “Save” of main screen to save the configure when the configure be completed.

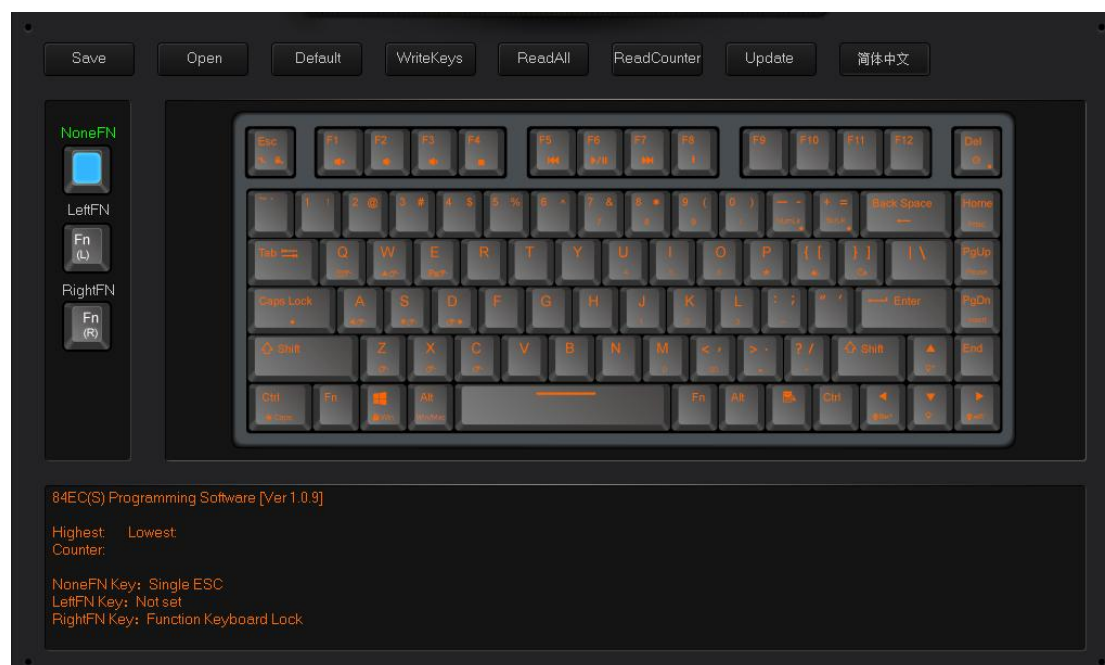
How to configure keyboard:

Under OFFICE mode, press the “M” key on the top right corner , “M” light turn on, then goes into custom mode. And goes into the OFFICE mode in the opposite way. All keys on the keyboard are divided into no FN layer, left FN layer and right FN layer, Left/right FN layer can output only when combine with left/right FN.

When finish the set up of all keys in programming software, to save and synchronize the configure with keys, single click the “WriteKeys” in the main screen.

Single click the “Read configuration” in the main screen, it will read the standard configuration of OFFICE mode when under the OFFICE mode and read custom configuration under custom mode.

When the “M” light is on, the keyboard is under custom mode, all the custom functions can be used.



Programming Software Main Interface

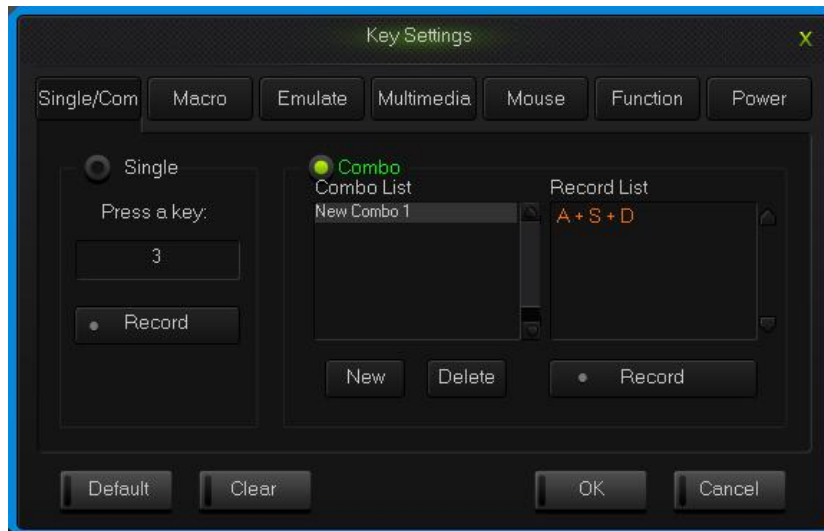
2.1 single key/ combine keys

1. Single click on the key you need to configure, click “Uni/ combo” in the

“KeySettings” surface.

2.Choose “Single” or “Combo”, single click “Record” to record the keys, combine keys can record six at most.

3.single click “OK”.



Single/Combo keys surface

2.2 Macro definition

The keyboard can be defined in the overall definition under a custom mode shows a strong programmable feature.

What is Macro

Macro is the whole series actions that you can specify order to the keyboard. Accurately speaking, it's a series key press and key release, record every single time of the key's press, release and delay. Among which, it can automatic input when delay, that is all the time between press and release can automatic input.

How to define a macro?

1. Choose the key you need to configure, click “macro ”;
2. Choose “New” on the left side of the appear window;
3. Choose a new macro, selected the style of output and automatic delay in the macro edit on the right side, then click “Record”, type the keys that need to be define on the keyboard and click “Stop Rec”;
4. Single click “OK”.

How to set up delay

Delay is the time between the press and the release of keys.keyboard has the

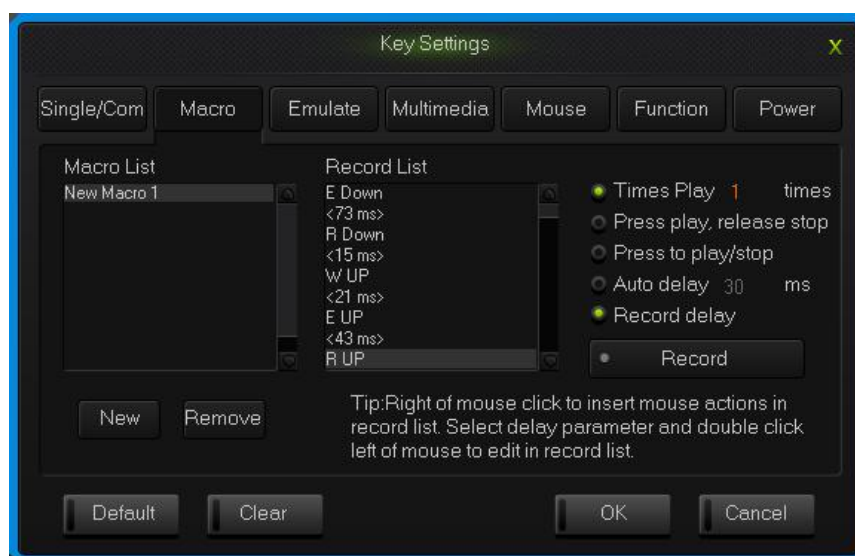
automatic delay record and can modify delay time:

Set up automatic delay record: drive automatic records the time that typing actions need;

Modify delay time(50ms-60000ms, 1000ms=1s): after define a macro, single click the delay time two keys already have, then the delay time will become to be editable and edit the delay time .sigle click the other area of record list to exit the editable status.

How to insert mouse and delay

After recording a macro, right click the key in the edit list, choose operate insert mouse and delay.



Macro definition key interface

2.3 Simulate key stroke

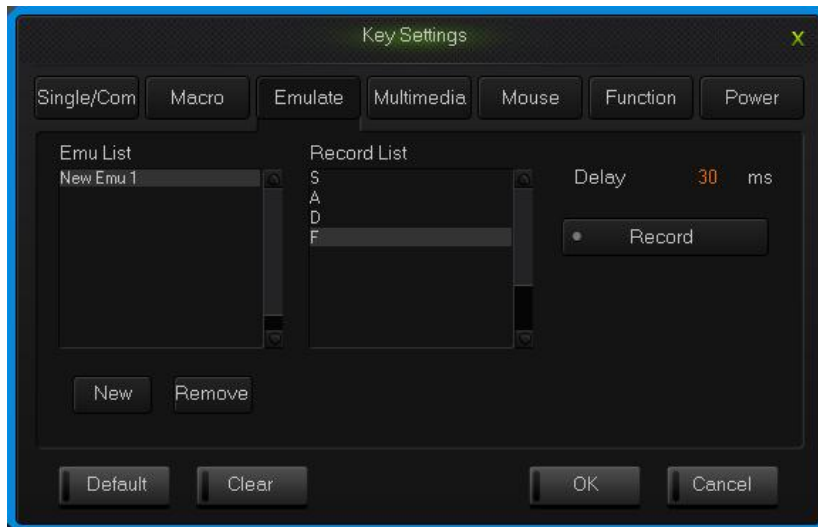
What is simulate key stroke?

Simulate key stroke is the function that after you click the simulate key, the keyboard will simulate the key stroke in a fast speed, it ends when the key bounce, it can also set up the speed of key stroke.

How to set up a simulate key stroke?

1. Single click the key you need to configure ,click “key stroke” in the “keys set up panel”;
2. Choose “New” in the left side of the appeared window;
3. Choose a new-built key stroke, set up the key stroke time in the edit list on

the right side, single click “Record”, type in the keys that need define, then click “Stop Rec”, simulate key stroke can record six at most;
4. Single click “OK”.

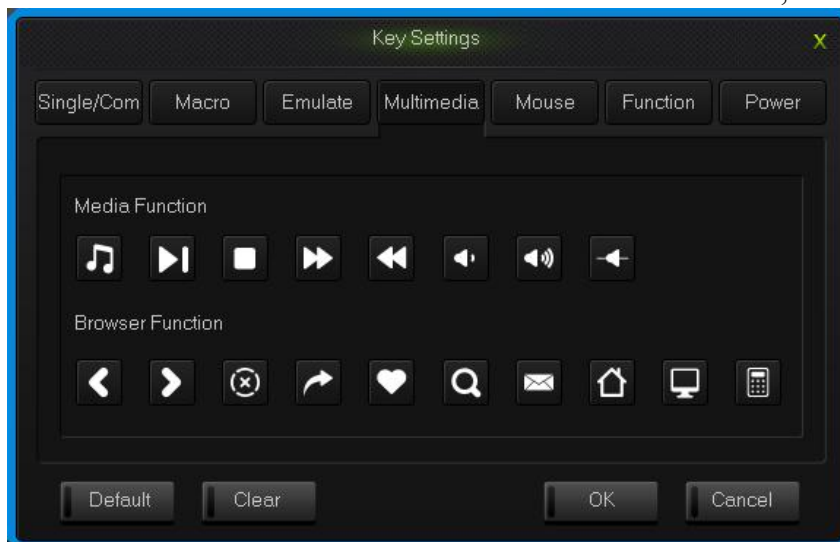


simulate key stroke interface

2.4 Multi-Media

The keyboard support usual function for multi-media, custom multi-media simplify the layout of keyboard.

1. Single click the key you need to configure, single click “Multimedia”;
2. Choose custom multi-media in the multi-media interface, then click “OK”.



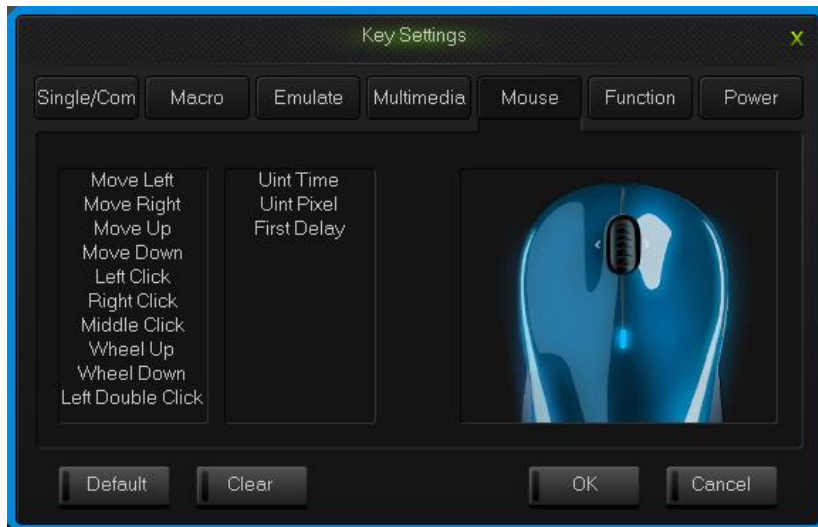
Multi-media interface

2.5 Mouse

The keyboard support Mouse. Unit Time refers to the time required by a mouse cursor move to a cell; Unit Pixel refers to the number of pixels the move a cell in the mouse cursor; First Delay refers to the interval between the mouse cursor

moving the first cell to the second cell.

1. Single click the key you need to configure, click “Mouse” in the dialog box of “Key Settings” that pops out;
2. Choose custom mouse functions in the mouse panel, the click “OK”.

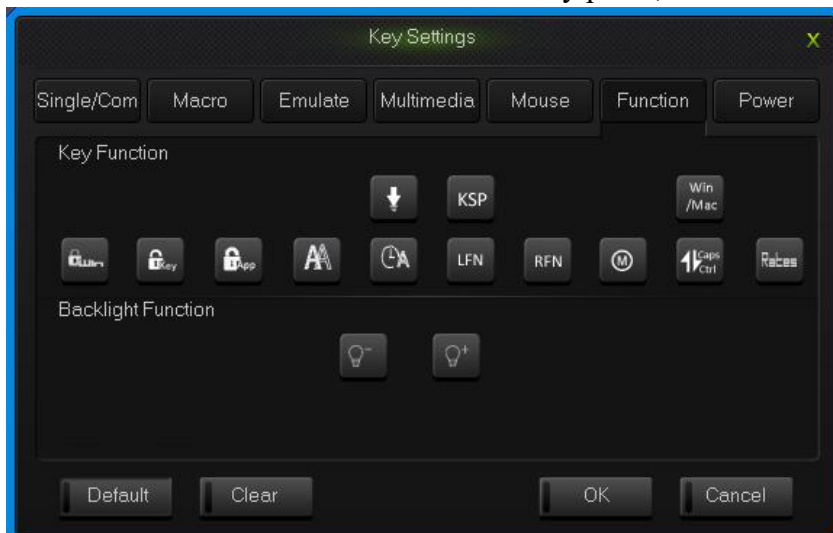


Mouse interface

2.6 Function Key

The control key are divide into key function and backlight function.

1. Single click the key you need to configure, click “Function” in the dialog box of “key Settings” that pops out;
2. Choose custom functions in the control key panel, the click “OK”.

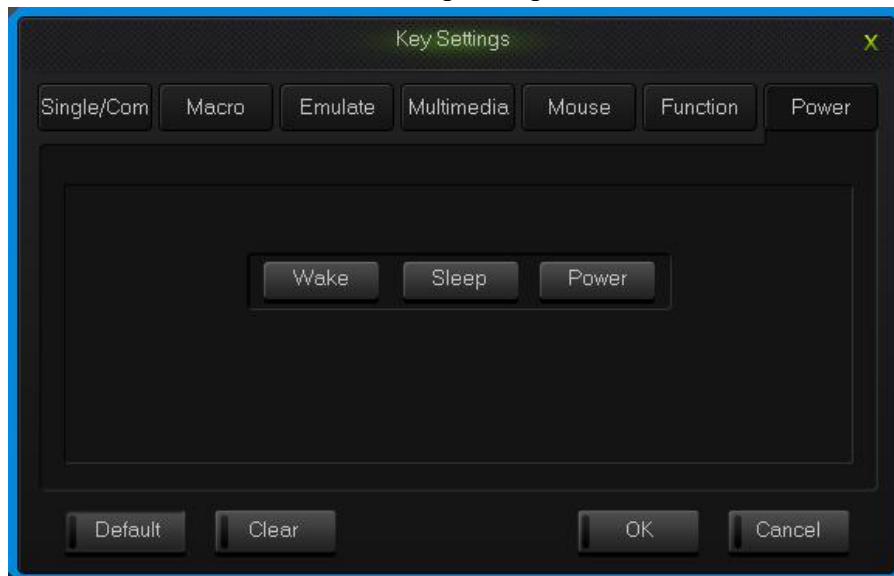


Function key interface

2.7 Power

The keyboard support power function.

1. Single click the key you need to configure, click “power” in the dialog box of “KeySettings” that pops out;
2. Choose custom functions in the power panel, then click “OK”.



Power interface

2.8 Empty configuration

There are two circumstances for empty configuration, one is empty single key configuration, the other is empty all the configure keys.

To empty single key configuration, just single click the key and choose “Clear” in the set window.

To empty all the configuration, single click “Clear” in function bar on the main screen.

How to save and open configuration

Every configuration document corresponds to a kind of key stroke mode, so it will be more convenient for the users to configure the common programs of the keyboard. Configuration information include keys set up information and backlight set up information.

You can save those configurations that don't need in a short time on your PC and direct import next time when needed. This can avoid set up repeated.

You can still import the documents saved in PC when using another computer,

The specific ways are below:

Open the configuration

1. Single click “open” at the function bar in main screen, choose the catalog and the corresponding configuration in the dialog box of open configuration that pops out.
2. Single click “Open”.

Save configuration

1. Single click “Save” at the function bar in main screen, choose the catalog and type in the name of configuration in the dialog box of save configuration that pops out.
2. Single click “Save”.

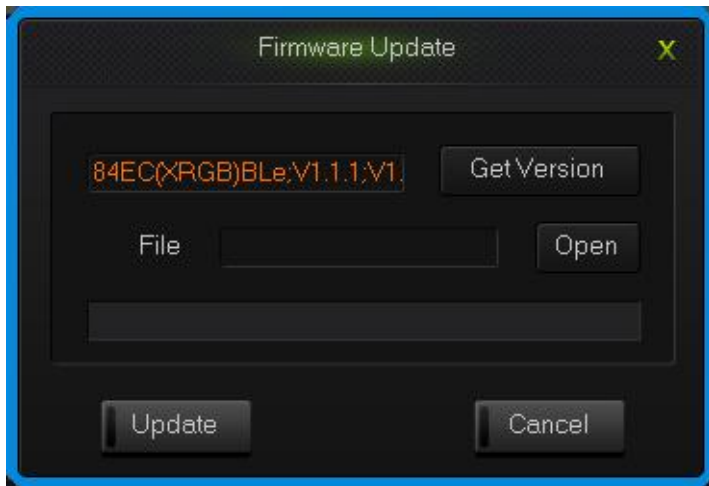
How to Get key usage times

Single click “Get Counter” at the function bar in main screen, after reading the completion, the mouse to move to the corresponding button position, the information box can see the number of times the button is hit.

How to upgrade keyboard firmware

Upgrade keyboard firmware in order to improve the performance of the keyboard and the function that design for users experience.

1. Single click “Get Version” and can get firmware’s name and version.
2. Single click “Open”, choose .bin document and single click “Update”, then update the firmware of the keyboard with the tips.



upgrade keyboard firmware interface