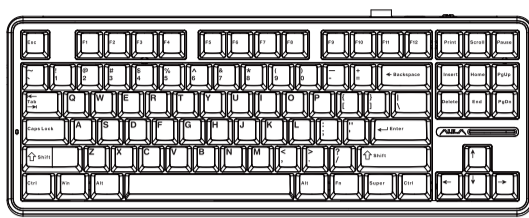


English



**WIND F87**  
3 IN 1 HOT-SWAPPABLE  
RGB GASKET MECHANICAL KEYBOARD



**SOAI**

Dongguan Suoai Electronics CO.,LTD  
www.aulastar.com  
SOAI Industry Park, Huayu Street Changlong  
Village Huangjiang Town Dongguan City  
Guangdong Province  
Execution Standard:GB/T 14081-2010  
Made in China

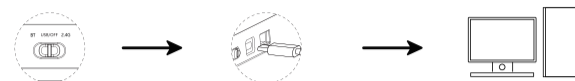
**Keyboard Function (3-Mode Connection Version) 01**



- ① CAPSLOCK
- ② USB Receiver
- ③ Type-C port
- ④ Mode Switch(2.4G/Wired/BT)
- ⑤ RGB Light Strip/Battery Indicator

- Stylish exterior design, 87-key layout, GASKET structure, delicate and soft hand feeling.
- Keycaps and mechanical switches are pluggable, and users can also purchase switches and personalized keycaps for free DIY.
- The keyboard is made of solid materials and the keys are responsive.
- Dual adjustable foot support, hidden receiver storage.
- Return of rate:125Hz.
- All keys anti-ghosting for all connection modes.

**Wired Mode Turn ON/OFF 02**



- ① Switch to [USB/OFF] mode
- ② Plug the Type-C cable into the port on the keyboard
- ③ Plug another USB into your computer's USB port.

**Instructions for switching on and off**

- Turn the mode switch to USB/OFF(not plugged into the USB power supply), the keyboard is turned off and the built-in battery stops powering the keyboard.

**2.4G Connection Instructions 03**

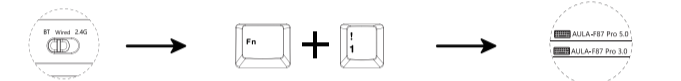


- ① Switch to [2.4G] mode
- ② Remove the [USB Receiver] from the upper right corner slot of the keyboard.
- ③ Plug into your computer's USB port to use

Fn + [2.4G] Short press Fn+ [2.4G] into 2.4G Mode

- Manual pairing: Long press the key combination "Fn+ [2.4G]" for about 3 seconds, the key " [2.4G]" start fast flash cyan light, keyboard enter code pairing state. At this time, plug the USB receiver into the USB port of your computer. Then finished.

**BT Connection Instructions 04**



- ① Switch to [BT] mode.
- ② Long press the key combination "Fn+ [BT]" for about 3 seconds, the " [BT]" key start fast flash cyan light, into the code pairing state.
- ③ Search for the pairing name [AULA-F87 Pro 3.0] or [AULA-F87 Pro 5.0], the blue light will turn on for 2seconds after the connection is successful.

**Quick Mode Switching with Key Combo:** Long press Fn + [1] | Device 1 | Device 1 | Device 1

- In BT mode, keyboard can be connected to three devices.
- Short press Fn+ [1/2/3] to switch to BT1/BT2/BT3.
- In BT mode, keyboard battery level can be displayed on the computer.

**Backlight Effect Adjustment 05**

FN+INS key combination to switch 16 light effects				
Wave (Restore default rear light effect)	Follow wave	F(x)	Pinwheel	Waterfalls
Flower	Game mode	Turn off	LIGHT	Breath
Rainbow	Burst	Rainy	Wave_2	Stars
River				

**Backlight Effect Key Combo Adjustment**

Fn +	Insert	Switching light effect modes	Fn +	↓	Reduced light brightness
	Delete	Switching light color		←	Light speed down
	↑	Increased light brightness		→	Light speed up

- Use 10 different music rhythm RGB light effects with the driver.

**RGB Light Strip Adjustment**

Fn +	Left Shift	Switching light effect modes
	Z	Switching light color
	B	Switching battery indicator mode

**RGB Sidelight Adjustment**

Fn +	Right Shift	Side light mode switching
	?	Side light color switching
	Alt	Sidelight brightness cycle switching
	Right Ctrl	Sidelight speed cycle switching

**OS Switching 06**

- FN+WIN=Lock/Unlock WIN key (in WIN system, when locking WIN key indicator light is always on, WIN key can not be used).
- Under Windows system, if you switch to MAC/IOS system mode, the position of WIN and ALT keys will be exchanged, and F1-F12 are the multimedia function buttons.

Fn +	Q	Android	Fn +	E	MAC
	W	Windows		R	IOS

**Combo Key Description 07**

Step 1: Switch the mode switch to the corresponding gear					
FN+	ESC	Long press for 3 seconds to restore factory settings	FN+	1	Bluetooth device 1#
	~	Long press for 3 seconds, 2.4G matching		2	Bluetooth device 2#
	WIN	Lock the WIN key, the WIN key can not be used when locked		3	Bluetooth device 3#

- FN+ESC long press for three seconds = restore default state, connected BT devices will not be cleared

**FN+Q switch to Android system mode (Q key red light flashes 3S), F area single press function and F area FN combination function**

Key Position	Single press	FN key combo	Key Position	Single press	FN key combo
F1	Screen brightness -	F1	F7	Previous song	F7
F2	Screen brightness+	F2	F8	Play/Pause	F8
F3	Convert window	F3	F9	Next song	F9
F4	Back to desktop	F4	F10	Mute	F10
F5	Light brightness-	F5	F11	Volume -	F11
F6	Light brightness+	F6	F12	Volume +	F12

**FN+W switch to WINDOWS system mode (W key red light flashes for 3s), F area single press function and F area FN combination function**

Key Position	Single press	FN key combo	Key Position	Single press	FN key combo
F1	F1	Desktop	F7	F7	Previous song
F2	F2	Mail	F8	F8	Play/Pause
F3	F3	Convert window	F9	F9	Next song
F4	F4	Open explorer	F10	F10	Mute
F5	F5	Light brightness -	F11	F11	Volume -
F6	F6	Light brightness +	F12	F12	Volume +

**FN+E switch to MAC system mode (E key red light flashes 3S), F area single press function and F area FN combination function**

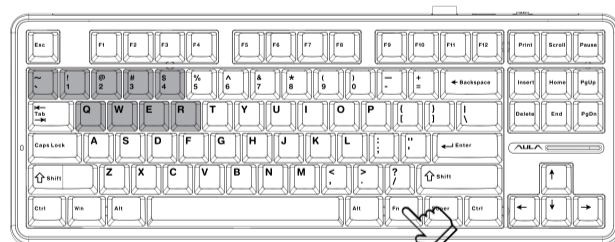
Key Position	Single press	FN key combo	Key Position	Single press	FN key combo
F1	Screen brightness -	F1	F7	Previous song	F7
F2	Screen brightness+	F2	F8	Play/Pause	F8
F3	Convert window	F3	F9	Next song	F9
F4	Back to desktop	F4	F10	Mute	F10
F5	Light brightness-	F5	F11	Volume -	F11
F6	Light brightness+	F6	F12	Volume +	F12

**FN+R switch to IOS system mode (R key red light flashes 3S), F area single press function and F area FN combination function**

Key Position	Single press	FN key combo	Key Position	Single press	FN key combo
F1	Screen brightness -	F1	F7	Previous song	F7
F2	Screen brightness+	F2	F8	Play/Pause	F8
F3	Convert window	F3	F9	Next song	F9
F4	Back to desktop	F4	F10	Mute	F10
F5	Light brightness-	F5	F11	Volume -	F11
F6	Light brightness+	F6	F12	Volume +	F12

**Indicator light Description 08**

Press and hold FN to view: Current link mode (2.4G, BT, wired); current BT channel (channel 1/2/3) Current system mode (android, win, mac,ios) Press and hold FN, the keys corresponding to the above different keyboard modes will light up, release FN to restore the normal lighting effect.

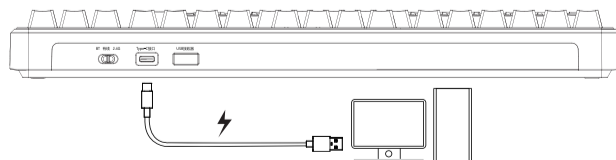


- 2.4G mode corresponding key indicator = "~" key
- Wired mode corresponding key indicator = "4" key
- BT channel corresponding key indicator = "1,2,3" key
- Operation system mode key indicator = "Q,W,E,R".

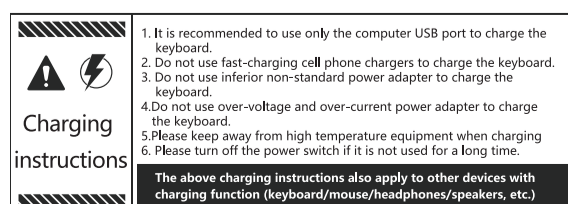
**Intelligent Standby Mode Description 09**

- BT/2.4G mode automatically enters power-saving mode (lights off) after one minute without any operation, and wakes up the keyboard by clicking a key.

**Charging Instructions for Use 10**



- Connect the keyboard to the computer via the provided USB cable to charge the keyboard. The RGB ambient light bar streamer shows when charging, and the green light stays on when fully charged. In 2.4G/BT mode (no USB plugged in), the RGB ambient light bar can display the keyboard power, the FN+B. The green light shows when fully charged. As the power is consumed, the green light gradually decreases, and the low battery indicator turns red. Type-C connectivity is more reliable and performance is more stable.



**Product Parameters 11**

- Number of keys: 87
- Total travel: 4.0mm
- FN built-function key
- Size: 365.90×139.00×41.10±1mm
- Charging voltage, current: DC 5V= 600mA
- Rated voltage: DC 3.7V fully charged 4.2V
- Battery capacity: Rechargeable lithium battery
- Rated current: 180mA @3.7V (default lighting) 15 mA (turn off all the lights.)
- Charging interface: type-c interface



Battery capacity	4000mAh	8000mAh
Weight	About 916g (without cable, receiver) About 935g (with cable, receiver)	About 987g (without cable, receiver) About 1006g (with cable, receiver)
Battery life	Approx. 22 hours (default light effect) Approx. 266 hours (all lights off)	Approx. 44 hours (default light effect) Approx. 532 hours (all lights off)

- Computer system requirements  
Wired, 2.4G mode: Support WINDOWS ALL operating systems (XP, WIN7,WIN8,WIN10), under WIN95,WIN98 systems, drivers may be required.  
Wired Mode/2.4G Receiver: Configured with USB version 1.1 or above interface.  
BT Device Name "AULA-F87 Pro 3.0": WIN7 and lower systems  
BT Device Name "AULA-F87 Pro 5.0": WIN8, WIN10 and above.  
BT Mode: MAC computer with BT BT3.0,BLE4.0,BLE5.0 and above hardware, Android phone or tablet, IOS phone or tablet.
- Hardware connection  
Wired USB/2.4G receiver supports hot-swapping (plug and play).